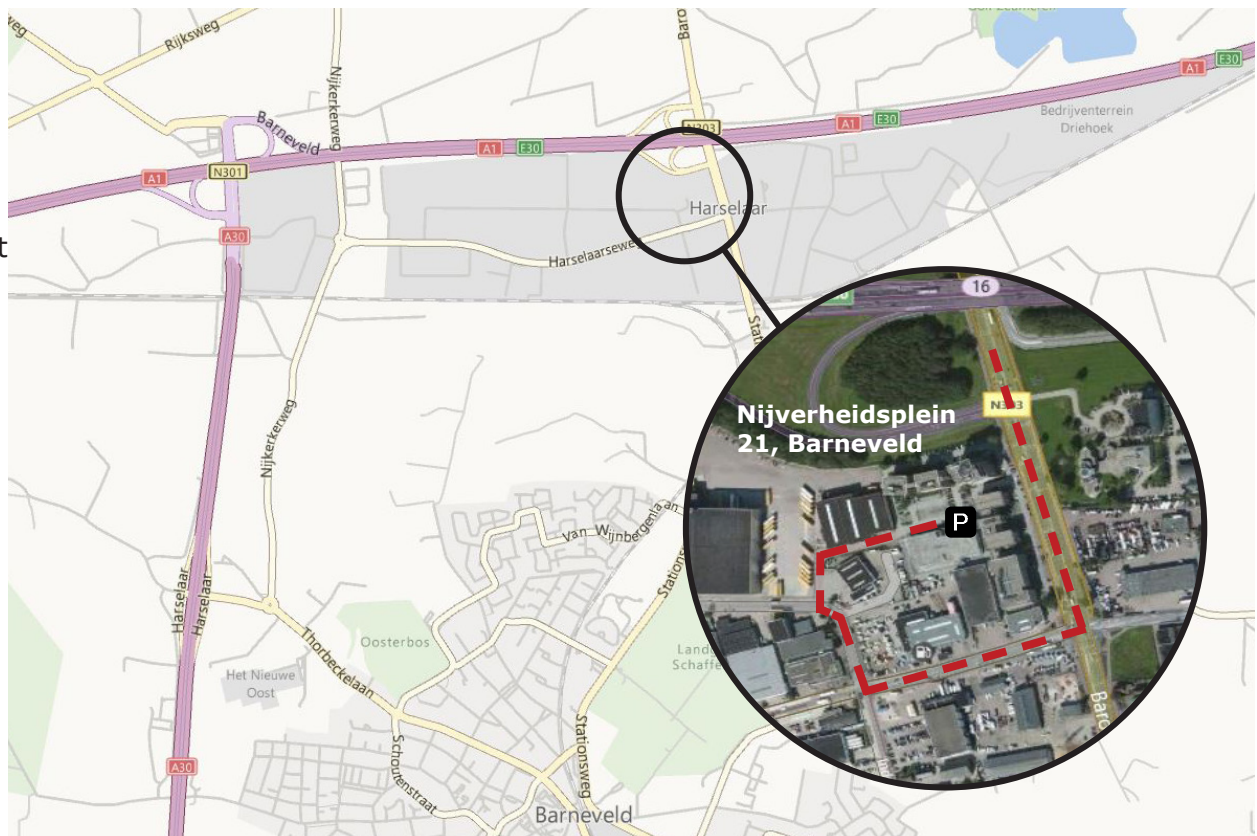


# Route Description

## Lagerwey Main Offices

Nijverheidsplein 21  
3771 MR, Barneveld



**A1**

Apeldoorn

**A1**

Amersfoort

**A30**

Ede / Veenendaal



### Coming from the Direction of Apeldoorn on the A1

Follow the A1 direction Amsterdam. Take exit 16 (Voorthuizen). Turn right onto the Baron van Nagellstraat. Go underneath the motorway and at the second crossroads turn right onto the Harselaarseweg. Take the first turnoff to the right onto the Nijverheidsweg. In the first bend, turn right. You have arrived at our parking; the main entrance is on the other side of the building to the left.



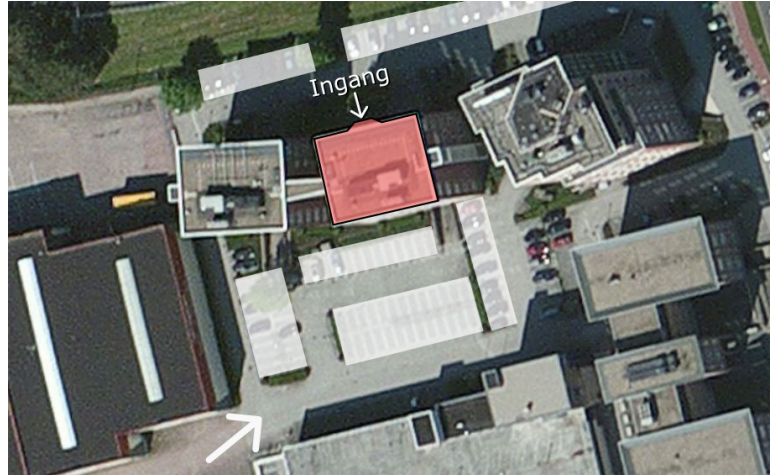
### Coming from the direction of Amersfoort on the A1

Follow the A1 direction Apeldoorn. Take exit 16 (Voorthuizen) Turn right onto the Baron van Nagellstraat. At the first crossroads turn right onto the Harselaarseweg. Take the first turnoff to the right onto the Nijverheidsweg. In the first bend, turn right. You have arrived at our parking; the main entrance is on the other side of the building to the left.



### Parking

There is ample parking near the Lagerwey offices. It might be easiest to park around the front of the building near the main entrance.



### By Public Transport (train and 12 minutes walking)

Our offices are easily accessible by public transport. Please take a train to Barneveld-Noord station. Cross the railway tracks via the stairs of the Transferium. Follow the Industrieweg and cross the Harselaarseweg. The road is now called Nijverheidsweg. Turn right in the bend, onto the Nijverheidsplein. Follow the road. You will arrive at the back of the building; the main entrance is around the front of the building.

